

Copy Tray Unit-G1 Installation Procedure

Follow the instructions herein when installing the copy tray to its host copier.

1	Unpacking
----------	------------------

Unpack the shipping box of the copy tray, and check to make sure that none of the items indicated in Figure 1-1 is missing:

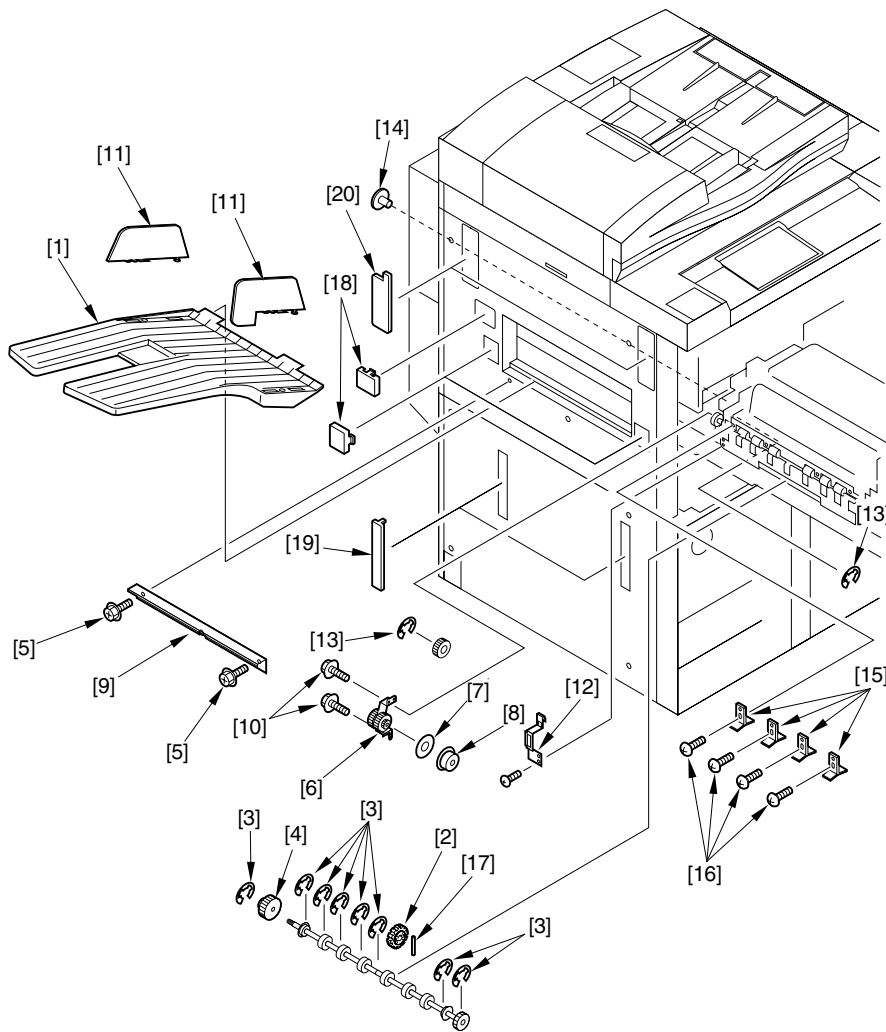


Figure 1-1

- | | | | |
|---------------------------------------|-------|---|------------|
| [1] Copy tray | 1 pc. | [11] Side guide plate (front, rear) | 1 pc. each |
| [2] Stirring roller | 1 pc. | [12] Delivery gear face plate | 1 pc. |
| [3] E-ring (large) | 8 pc. | [13] E-ring (small) | 2 pc. |
| [4] Drive gear | 1 pc. | [14] Flat screw (M4) | 1 pc. |
| [5] Self-tapping screw (M4x8) | 2 pc. | [15] Guide | 4 pc. |
| [6] Drive unit | 1 pc. | [16] Binding screw (M2.6x6) | 4 pc. |
| [7] Spacer | 1 pc. | [17] Parallel pin (2x14) | 1 pc. |
| [8] Bearing (small) | 1 pc. | [18] Cap cover | 3 pc. |
| [9] Reinforcing plate | 1 pc. | [19] Grip cover | 2 pc. |
| [10] RS tightening screw (M4x8) | 2 pc. | [20] Face plate | 2 pc. |

2 Mounting to the Host Copier

- 1) Open the front cover, and slide out the fixing/feeding unit.
- 2) Remove the transfer/separation charging assembly cover, fixing/feeding unit releasing lever, and fixing roller knob.
- 3) Remove the fixing/feeding unit cover.
- 4) Open the external delivery upper unit; then, remove the four screws [1], and detach the two straightening guides [2] from the front and the rear.

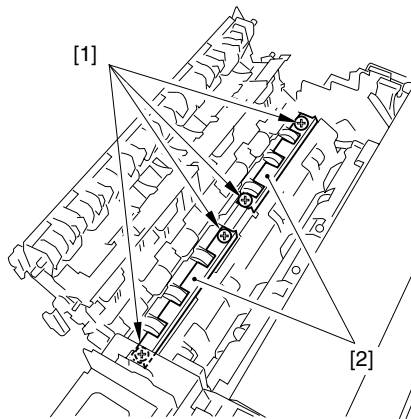


Figure 2-1

- 5) Close the external delivery upper unit; then, remove the three screws [1], and detach the delivery roller guide [2].

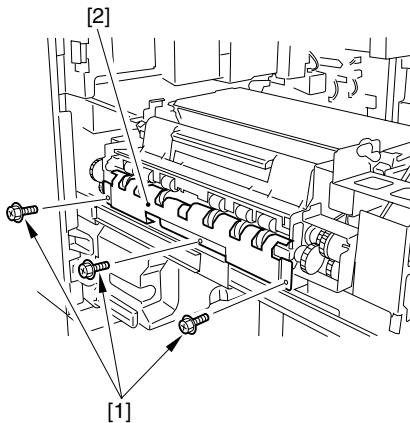


Figure 2-2

- 6) Remove the screw [3], and detach the positioning plate [2] from the front of the delivery upper unit [1]; then, remove the E-ring from the rear, and detach the external delivery upper unit.

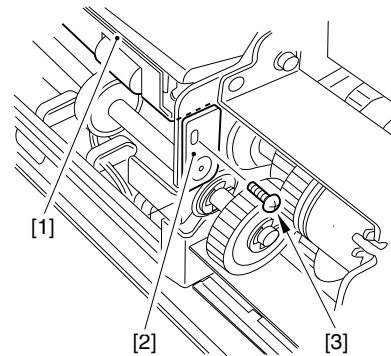


Figure 2-3

- 7) Remove the two E-rings [2] from the front of the delivery roller [1] and the E-ring [3] from the rear; then, detach the delivery roller. Further, remove the E-ring [4], and detach the driver gear [5].

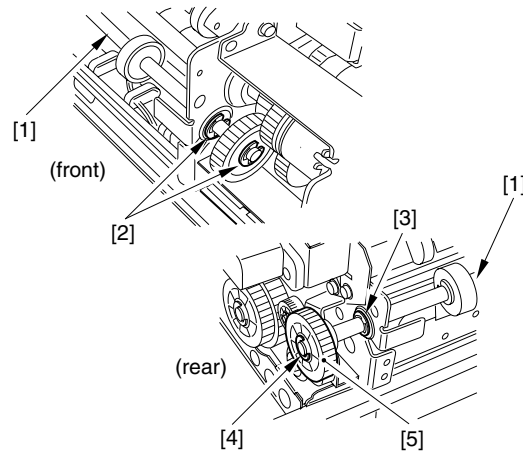


Figure 2-4

- 8) Remove the E-ring [1] and the gear [2]; then, remove the two screws [3], and detach the drive assembly [4]. Further, remove the screw [5] used to secure the fixing drawer.

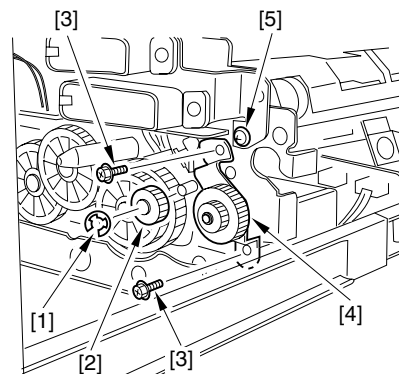


Figure 2-5

- 9) Remove the bearing at the rear of the delivery roller; then, remove the three pairs of E-rings [1], parallel pin [2], and roller [3] (3 each). Next, mount the stirring roller [6] to the middle of the delivery roller using the E-ring (large) [4] and the parallel pin [5] that comes with the copy tray unit. Lastly, mount the three rollers to the delivery roller using the parallel pin and the E-ring (large) that come with the copy tray unit.

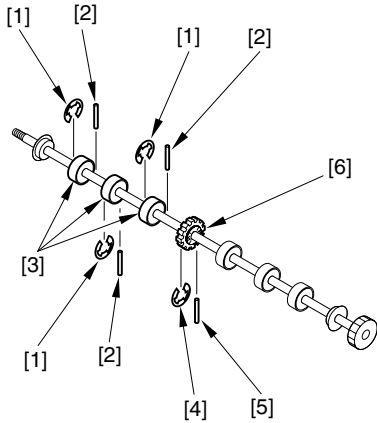


Figure 2-6

- 10) Mount the delivery roller [1] assembled in step 9) to the copier, and mount the bearing [2] at the rear; thereafter, mount the bearings (large) [3] that come with the unit (2 pc. at the front, 1 pc. at the rear).

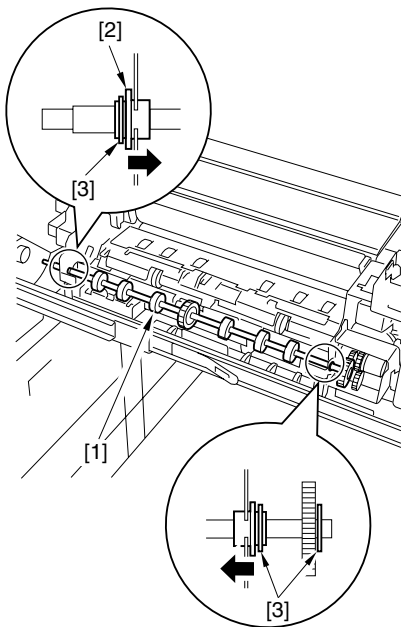


Figure 2-7

- 11) Fit the external delivery top unit removed in step 6); then, mount the E-ring (small) that comes with the unit at the rear, and mount the positioning plate at the front using a screw.
- 12) Fit the flat screw [1] that comes with the copy tray unit where it was removed in step 8).
- 13) Mount the drive gear [2] and the E-ring (large) [3] that come with the copy tray unit.

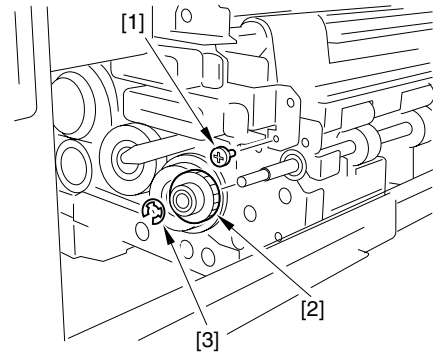


Figure 2-8

- 14) Fit the spacer [2] and the bearing [3] to the drive assembly [1] that comes with the copy tray unit; then, mount it to the host copier with two screws (RS tightening) [4]. Mount the gear [5] removed in step 8) and the E-ring (small) [6] that comes with the unit.

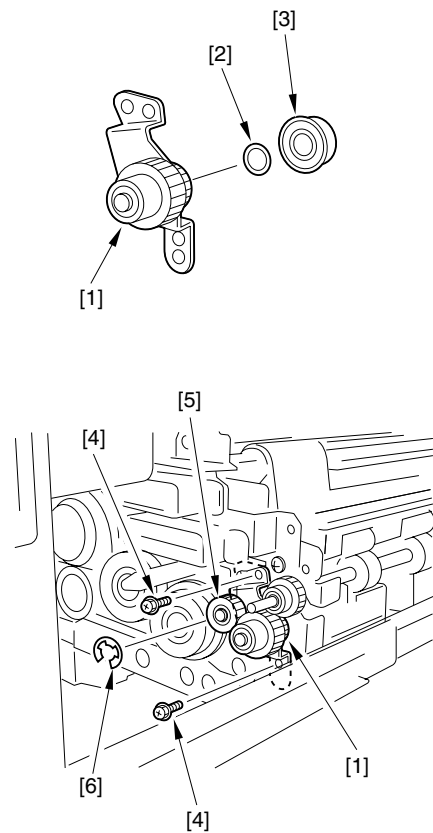


Figure 2-9

- 15) Mount the four guides [1] that come with the copy tray unit with a screw (binding; 1 each) [2]. Be sure so that the guide is mounted in the correct orientation.

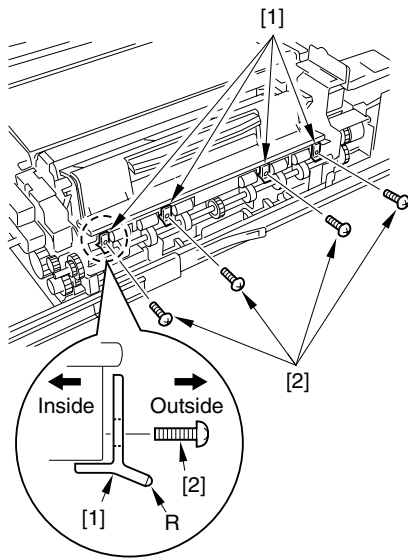


Figure 2-10

- 16) Secure the delivery roller guide removed in step 5) using the fixing screws at the front and the middle.
 17) Put the delivery gear face plate [1] that comes with the copy tray unit over the rear of the delivery roller guide, and secure them together in place with a screw [2].

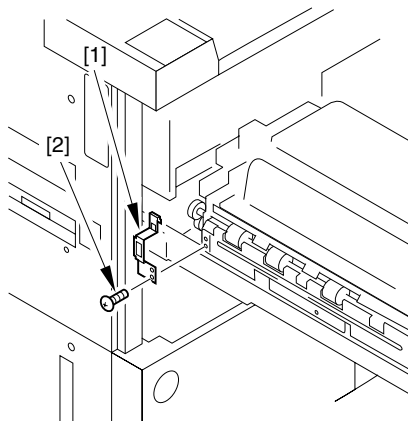


Figure 2-11

- 18) Mount the fixing/feeding unit cover, fixing roller knob, fixing/feeding unit releasing lever, and transfer/separation charging assembly cover; then, fit the fixing/feeding unit, and close the front cover.

- 19) Mount the copy tray [1] to the host copier.

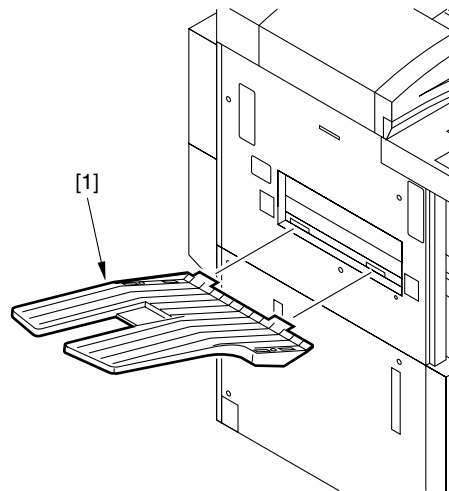


Figure 2-12

- 20) Mount the side guide plates (front, rear) [1] that come with the copy tray unit. At this time, be sure that they are oriented as shown in Figure 2-13.

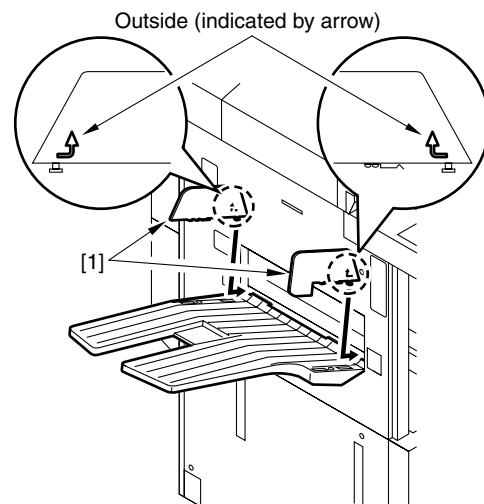


Figure 2-13

- 21) Mount the reinforcing plate [1] that comes with the copy tray unit to the bottom of the copy tray with two screws (tapping) [2].

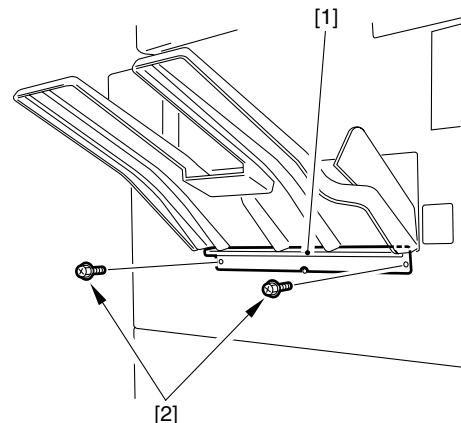


Figure 2-14

- 22) Remove the grip cove from the left side of the machine, and shift up the grip; then, remove the four screws, and detach the left lower cover. Thereafter, disconnect the connector [1] of the fan used to prevent adhesion upon delivery shown in the diagram. Depending on the time the main unit is manufactured, the grip cover may not be attached to it.

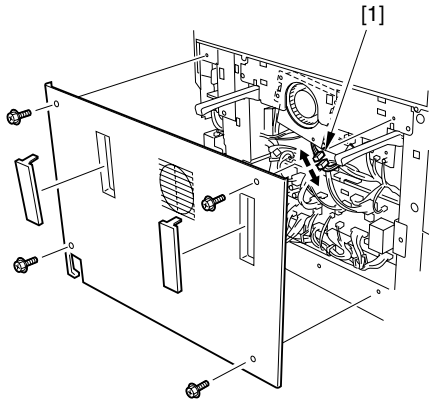


Figure 2-15

- 23) Put back all parts that have been removed in step 22. Be sure to see to it that these steps are performed without fail. At the end, an alarm ('330007', indicating the suspension of the fan used to prevent adhesion upon delivery) will be indicated; keep in mind that it is a normal condition, and the operation of the machine will not be affected.

3	Attaching covers
----------	-------------------------

- 1) Attach the following small covers to the main unit.
 [1] Cap cover 3 pc.
 [2] Grip cover 2 pc.
 [3] Face plate 2 pc.
 Depending on the time the main unit is manufactured, these parts may be attached to it in advance.

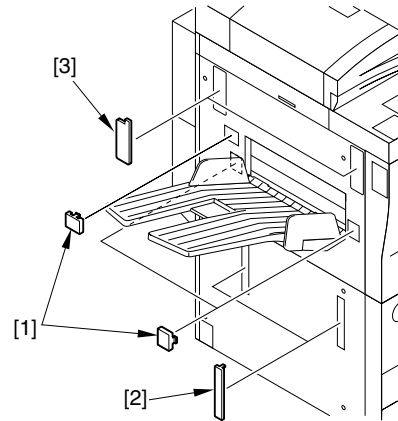


Figure 3-1